



Middle School – High School Study for:  
**Alden-Hebron School District #19**



**Does the Present School Building  
provide a  
Conducive learning environment  
for the students  
to achieve their goals?**



# Existing High / Middle School Site



Security issues

Land locked – No room for expansion

# Total cost to Healthy and safe upgrade of 94-Year-old Original Building + 62-Year-old Addition

Health Life safety  
Required items

Total Cost:  
\$245,454

Health Life safety  
Building Maintenance & Improvement  
Recommended items  
Total Cost: \$13,737,320

Grand Total of  
\$13,982,774



# Stage / Cafeteria Entrance

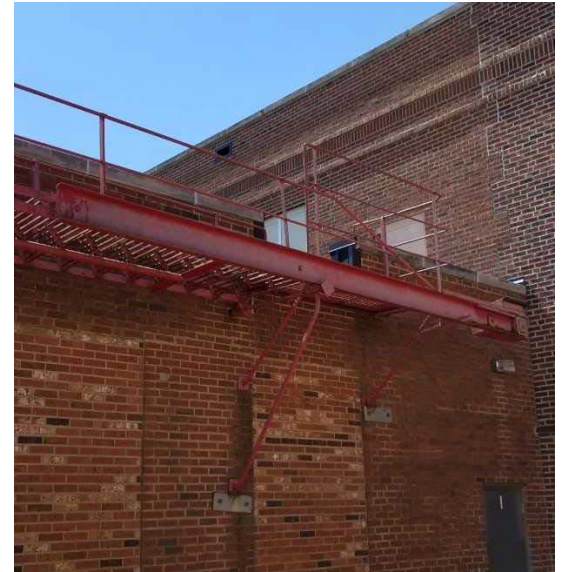


Door Closed



Door Open

# Fire Exit through Band Room





Demolition Budget  
\$465,000.00

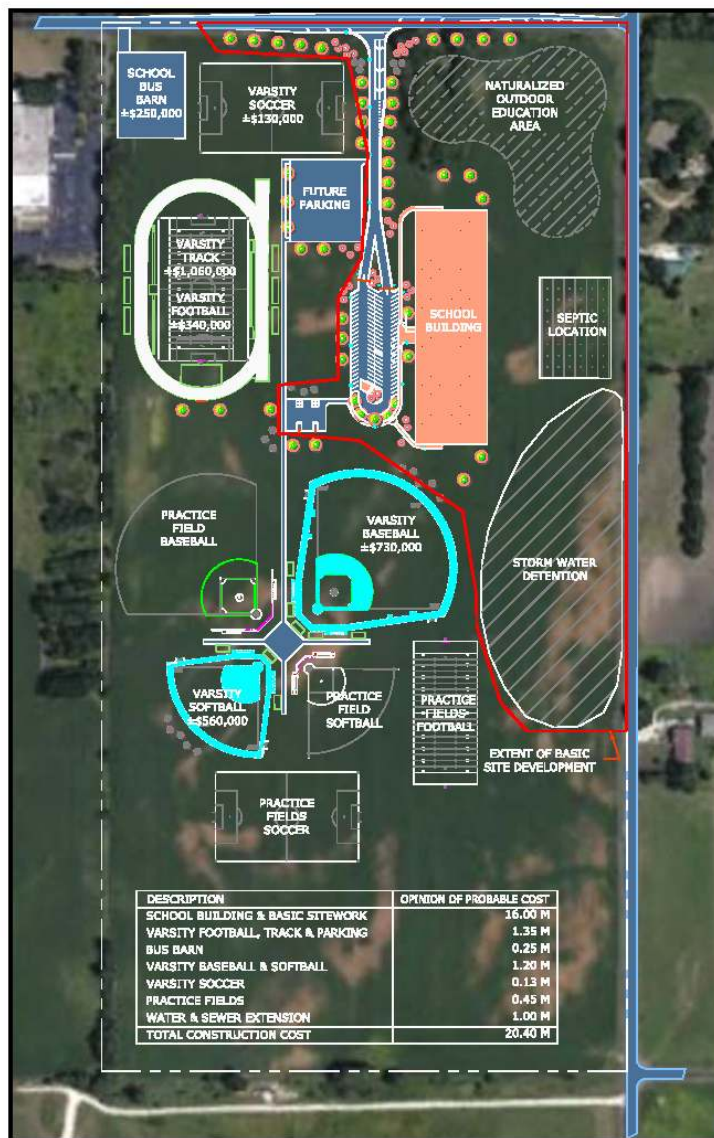
Asbestos  
Abatement Budget  
\$75,000

Alden Hebron  
District #19

Triseal Corp



BRADLEY AND BRADLEY  
— ARCHITECTS —



DESCRIPTION	OPINION OF PROBABLE COST
SCHOOL BUILDING & BASIC SITEWORK	16.00 M
VARSITY FOOTBALL, TRACK & PARKING	1.35 M
BUS BARN	0.25 M
VARSITY BASEBALL & SOFTBALL	1.20 M
VARSITY SOCCER	0.13 M
PRACTICE FIELDS	0.45 M
WATER & SEWER EXTENSION	1.00 M
<b>TOTAL CONSTRUCTION COST</b>	<b>20.40 M</b>

**ALDEN-HEBRON SCHOOL DISTRICT #19**

